

RECLINER



GEELONG
MEDICAL
SUPPLIES

Monarch Chair

\$1490.00



Specifications:

Seat Width: 550mm

Seat Depth: 520mm

Seat Height: 500mm

Arm Height: 170mm

Back Height: 700mm

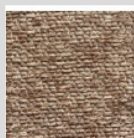
Overall Width: 820mm

Max User Weight: 130kg

SKU: CQ8117D

Features:

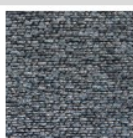
- Dual Motor
- Power lift and recline armchair
- Seamed backrest provides additional lumbar support
- Padded legrest is synchronised with the backrest
- Full chaise pad provides additional legrest support and comfort
- Supplied with magazine pocket
- Hand held controller is simple to use
- Rise or recline motion stops at any point when button is released
- Available in Fabric or Vinyl



Hazelnut Fabric
Code: 8117HA



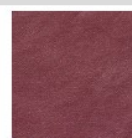
Forest Fabric
Code: 8117FO



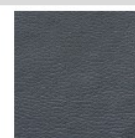
Pacific Fabric
Code: 8117PA



Coffee Vinyl
Code: 8117VCO



Shiraz Vinyl
Code: 8117VSH



Black Vinyl
Code: 8117VBL

**GEELONG MEDICAL
SUPPLIES PTY LTD**

PH: 03 5272 1414 FAX: 03 5277 2233

1/11 HEPNER PLACE, NORTH GEELONG
VICTORIA 3215

PO BOX 414, NORTH GEELONG VIC 3215

EMAIL: sales@geelongmedical.com.au